

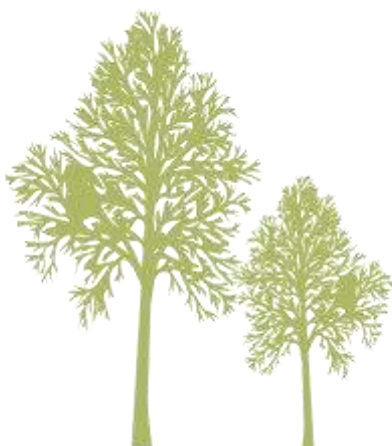


LGB Scheme of Delegation

Watermoor CofE school

2023-2024

Our vision is to enable all to flourish



Purpose of this document

Welcome to the Diocese of Gloucester Academies Trust. The purpose of this document is to set out transparent delegations for specific areas of activity or decision making within DGAT in a clear and accessible format. It is intended that this document will provide clarity for all involved in the governance of the Trust and secure consistency, avoid duplication and clearly define roles and responsibilities.

Acronyms used within this document

There are many acronyms used within the education sector, some of the common acronyms you will come across within this scheme of delegation are listed below. For a wider compendium of acronyms, you may come across in your time as a DGAT local governor please see our DGAT Acronym Buster which is available in the Local Governance Member area on the DGAT website.

Acronym	Long form
CEO	Chief Executive Officer
DCEO	Deputy Chief Executive Officer
HoGP	Head of Governance and People
HT	Headteacher
DHT	Deputy Headteacher
DGAT	Diocese of Gloucester Academies Trust
LGB	Local Governing Board
DfE	Department for Education
ESFA	Education, Skills and Funding Agency
ATH	Academy Trust Handbook
MAT	Multi Academy Trust
SIAMS	Statutory Inspection of Anglican and Methodist Schools

DGAT vision and values

Our vision and values are deeply rooted in the Christian faith, and these permeate our decision-making, our relationships, our communication and our learning.

Our Trust is founded on shared values and principles. Together, Trust Board, local governing boards, central team and school communities form one organisation. We are focussed on providing children of all faiths, and none, with excellent educational provision in an aspirational, caring and supportive Christian ethos.

**OUR VISION IS
TO ENABLE ALL
TO FLOURISH**

Our core principles

These underpin all we do and all the decisions we take.

- We aspire to be the best we can be in an ever-changing environment - providing opportunities for all to flourish.
- Within our DGAT family we cherish everyone as individuals, appreciating and celebrating diversity.
- We act with integrity; we are open to challenge, and we are reflective about our practice.
- We treat everyone with dignity and respect.
- Through collaboration, in a nurturing community, we grow, learn and achieve.

Our schools' ethos and vision

Each school will have its own distinctive vision which will be aligned with the Trust's vision. For Church of England schools within the Trust, the vision will be rooted in Biblical theology and distinctively Christian.

DGAT Governance Structure

Who we are: our roles and responsibilities:

The role and responsibilities of the Trust's Members and Trustees are set out in the Trust's Articles of Association, a copy of which can be found on the DGAT website.

Members

DGAT's Members are responsible for ensuring the governance of the Trust is effective and that Trustees govern in accordance with their statutory and charitable responsibilities. Members are responsible for:

- Amending the Trust's Articles of Association
- Appointing and Removing Trustees
- Appointing the Trust's auditors
- Receiving a copy of the Trust's annual accounts
- Maintaining oversight of the governance of the Trust

DGAT maintains clear separation between Members and the Trust Board to ensure transparent and effective oversight of the governance of the Trust.

Our current Members are:

- The Diocesan of Gloucester Education Trust as a corporate Member
- Mrs Sue Padfield
- Dr Jo Grills
- Mr Jon Millin
- The Very Reverend Andrew Zihni

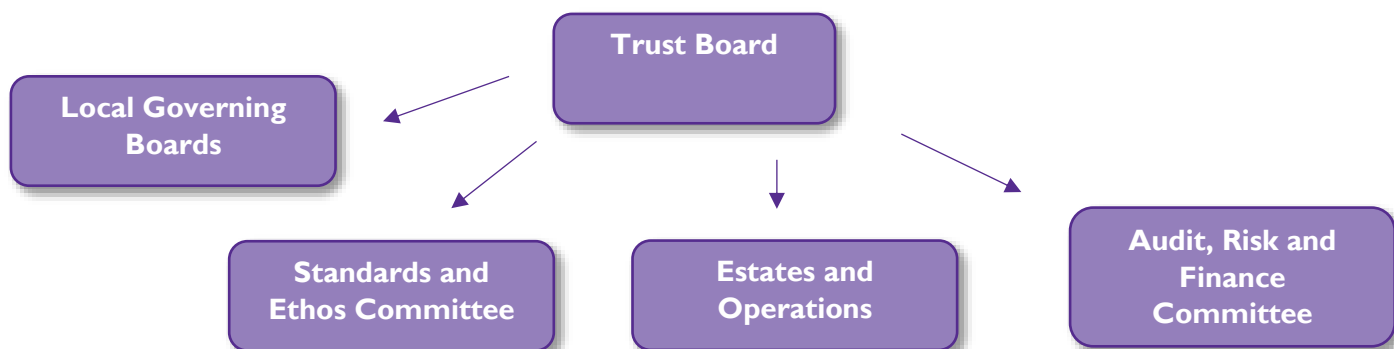
The Trust Board

The Trust Board is responsible for the strategic direction, statutory policy framework and oversight of the Trust and all its schools. Trustees take decisions that are in the best interests of the Trust as a whole and are not representative of any one of the constituent schools. Trustees are also Directors of the Trust which is a company limited by guarantee and registered as such at Companies House.

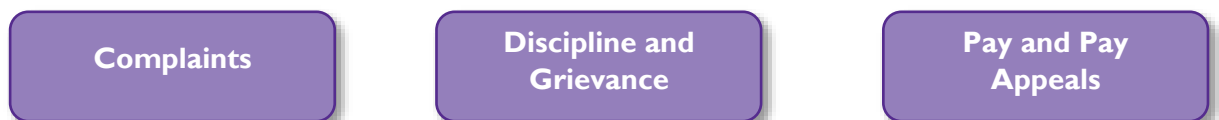
Our current Trustees are:

- Tim Brock (Interim chair)
- Rob Stokes
- Phillip Perks
- Charlotte Rawlings (Interim vice chair)
- Dr Robert Gwynne
- Stewart Hunter
- Jane Borgeaud
- Mike Allen

The Trust Board meets six times a year and delegates specific Trust-wide and strategic oversight and responsibilities to its committees. The Trust Board currently has the following committee structure in place:



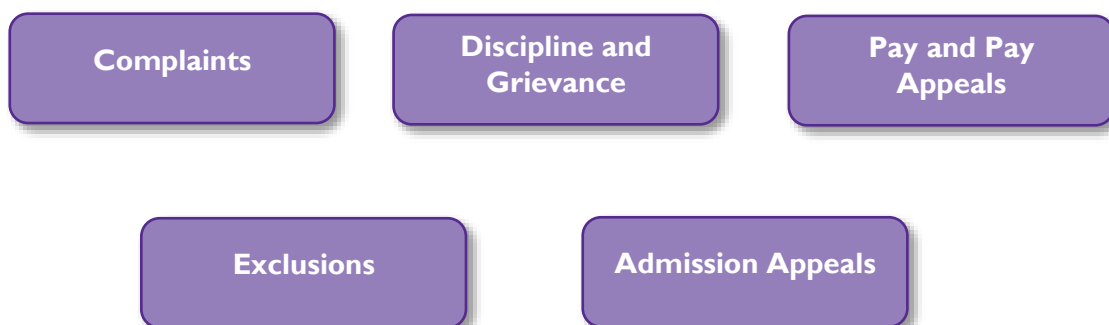
The Trust Board will convene the following committees or panels when required:



The Trust Board also delegates local oversight of its schools to local governing boards. Local governing boards are committees of the Trust Board. Currently, each school has a single local governing board which is delegated responsibilities through this scheme of delegation – the Trust Board retains the right, after discussion with the relevant local governing board to revoke or alter any aspect of this scheme of delegation for all schools within the Trust or for an individual school. Any decision to revoke or alter the scheme of delegation will be considered and voted on at a full Trust Board meeting.

The local governing board must establish a Finance and Resources Committee and it is strongly recommended that a Standards and Ethos committee is also in place. Terms of reference for these committees, and the local governing board are included as appendices.

Local governing boards may also be required to convene the following committees or panels as required and as per the delegated responsibilities set out in this scheme of delegation.



The LGB will ensure that Watermoor CofE School will:

Recognising its foundation and preserving and developing its religious character in accordance with the principles of the Church of England and in partnership with the Church at Parish and Diocesan level, serve its community by providing an education of the highest quality within the context of Christian belief and practice. It encourages an understanding of the meaning and significance of faith and promotes Christian values through the experience it offers to all its pupils.

Membership

The LGB will have the following members:

Type of governor	Number required	Appointed or elected
Foundation governor	1	Appointed by the Diocese Board of Education
Foundation Ex-officio governor	1	Automatic appointment of the local incumbent or their substitute for duration of time in role.
Parent governor	2	Elected by eligible members of the school parent body
Staff governor	1	Elected by eligible members of the school staff body
Co-opted governor	0	Appointed by the LGB
Headteacher ex-officio governor	1	Automatic appointment for duration of time in role.
Trust appointed governor	1	Appointed by DGAT
Total number of local governors	7	

For schools new to the Trust, the Board of Trustees, in consultation with the existing governing body will determine the constitution of the local governing board prior to the school joining the Trust. Any future changes will be determined by the Board of Trustees after consultation with the local governing board.

Meetings

Local governing board meetings

The requirements for DGAT local governing board meetings are set out in the DGAT Local Governing Board Terms of Reference and these must be adopted at the start of each academic year by the Local Governing Board, following review and ratification by the Trust Board. This document should be read and used in conjunction with the DGAT Local Governing Board Terms of Reference.

Local Governing Boards must hold a minimum of three full meetings per academic year but must ensure they meet regularly enough to discharge effectively the responsibilities set out in the DGAT Scheme of Delegation.

Authority

The Trust Board has ultimate and overall responsibility for each school within the Trust and are the ultimate decision-making authority for each school and the Trust. Trustees are required to undertake this responsibility and duty within the requirements and statutory responsibilities set out within the Trust's Funding Agreement and Memorandum and Articles of Association. Trustees are also required to have regard to the advice of the Diocese Board of Education.

The Trust Board sets out the constitution, membership, proceedings and authority of local governing boards within each local governing board scheme of delegation. The scheme of delegation is reviewed annually as a minimum but Trustees reserve the right to revoke or amend any aspect at any time it is considered relevant for an individual school or all schools within the Trust.

Chair's action

The chair of the local governing board is permitted to act and make decisions in urgent situations, where a delay in taking action or making a decision would cause a serious, detrimental effect to the school, a pupil, parent or member of staff – this is known as a 'chair's action'. The vice chair is permitted to take the same action, in the absence of the chair of the local governing board.

Chairs of the local governing board should record any action taken outside of governing board meetings on the 'DGAT Record of Chair's Action' form and share this with the local governing board and Head of Governance and People (HoGP) at the earliest opportunity.

Engagement with the Trust Board

The chair of the Trust Board hosts a chairs' group meeting three times a year, and the Trust Board host an in-person event for local chairs and trustees once a year. The CEO and Head of Governance and HoGP attend and report to these meetings. In these meetings, feedback is sought on local issues that are then shared with the Trust board to inform the Trust Board's strategic decision making and policy development. Updates from the Trust Board meeting are shared with this forum, with the intention that chairs cascade information to the local governing board.

Raising a concern about the Trust

The views of the local governing board are sought through the headteachers' forum and the chairs' group meeting. In addition, the CEO or HoGP may attend local governing board meeting to seek the views and hear feedback from local governors. These views are relayed to the Trust Board to aid Trustees in their decision making. Should an individual local governing board identify that the Trust is not meeting its obligations to the school, it may make representation directly to the Trust through the chair of the Trust Board.

Ultimately a petition may be made to the Diocesan Board of education or Regional Director. The legal position is that a school cannot itself choose to leave the Trust as it has no separate legal entity status. This decision can only be taken by the Regional Director.

Concern about the performance of the school or local governance

Where there is evidenced cause for concern about the performance of the school or local governing board the Trust Board, acting reasonably, reserves the unfettered right to review or temporarily remove any power or responsibility delegated to the LGB under this Scheme of Delegation informing the LGB of their intention to do so immediately in writing. Such concerns may include, but shall not be limited to:

- Action which undermines the work of the Trust
- Significant concerns about the educational outcomes for pupils
- Insufficient progress being made against educational targets.
- Performance which is no longer good in an Ofsted Inspection
- Performance which is no longer good in a SIAMS inspection
- Ongoing safeguarding or health and safety issues
- Actions by the LGB which contravene the legal obligations of the Trust or undermine the effective operation of the Trust
- Concerns regarding financial irregularity (for example, but not limited to, fraud)
- Significant budgetary concerns
- Failure to comply with Trust or statutory policies

In considering any material changes to this Scheme of Delegation or any framework on which it is based, the Trust Board will have regard to and give due consideration of any views of the LGB.

If the Scheme of Delegation is rescinded, then the LGB may be removed. In these circumstances, the Trust Board will put in place an Interim Governing Board (IGB) which will address the areas of concern and govern the school. The longevity of the IGB will be determined by the Trust Board and may be subject to discussion with the Regional Director.

Effective date and Review

This Scheme of Delegation shall operate from the Effective Date or any subsequent amended date in Respect of **Watermoor CofE school** and will be reviewed bi-annually as a minimum, in consultation with the LGB.

The LGB must comply with any advice or recommendations made by the Trust Board in the event that intervention is either threatened or is carried out by the Secretary of State.

Monitoring delegations within this scheme of delegation are intended to always be focussed on monitoring the implementation and impact of a decision or action.

- Trustee monitoring will be focussed strategically for all schools, with consideration of the Trust’s strategic plan and risk management strategy.
- Executive leadership team monitoring will be focussed on specific areas of the Trust’s strategic priorities as determined by the Trust Board.
- Local governing board monitoring will be focussed strategically at individual school level with consideration of the school’s individual vision and context.
- Headteacher monitoring will be focussed operationally at individual school level with consideration of the school’s individual vision and context.

Governance						
Decide		Decide - Has primary responsibility for decision making related to the decision or action.				
Consulted		Consulted - Will be consulted as part of the process of completing a task. Their contribution may inform the approach or decision.				
Deliver		Deliver - Accountable for: undertaking particular tasks; following agreed policies and procedures; ensuring appropriate training of staff.				
Monitor		Monitor - Responsible for reviewing whether a task or action is being carried out satisfactorily and, where appropriate, requiring action to be taken to ensure task is delivered appropriately.				
Decision/Action		Members	Trust Board	Executive leadership team	Local governing board	Headteacher
G.1	Review and agree the Trust’s governing documents and any amendments.	Decide	Consulted	Consulted	Consulted	Consulted
G.2	Review and agree the scheme of delegation for each school and amend terms of		Decide	Deliver	Consulted	Consulted

Governance						
Decide		Decide - Has primary responsibility for decision making related to the decision or action.				
Consulted		Consulted - Will be consulted as part of the process of completing a task. Their contribution may inform the approach or decision.				
Deliver		Deliver - Accountable for: undertaking particular tasks; following agreed policies and procedures; ensuring appropriate training of staff.				
Monitor		Monitor - Responsible for reviewing whether a task or action is being carried out satisfactorily and, where appropriate, requiring action to be taken to ensure task is delivered appropriately.				
Decision/Action		Members	Trust Board	Executive leadership team	Local governing board	Headteacher
	reference for the Trust Board or LGB.					
G.3	Ensure compliance with the scheme of delegation.		Decide	Monitor	Deliver	
G.4	Appoint or remove the chair of the LGB.		Decide	Consulted	Consulted	
G.5	Appoint the Trust company secretary.		Decide	Consulted		
G.6	Agree Trust-wide key performance indicators and strategic priorities for the Trust.		Decide	Consulted	Consulted	Consulted
G.7	Appoint the clerk to the LGB.			Consulted Please discuss all clerk appointments with the Head of Governance and People	Decide If the clerk is not employed by the central clerking service	
G.8	Maintain a register of interest for Members and Trustees.		Decide	Deliver		
G.9	To maintain a register of interest for local governors.			Monitor	Deliver	

Governance					
Decide	Decide - Has primary responsibility for decision making related to the decision or action.				
Consulted	Consulted - Will be consulted as part of the process of completing a task. Their contribution may inform the approach or decision.				
Deliver	Deliver - Accountable for: undertaking particular tasks; following agreed policies and procedures; ensuring appropriate training of staff.				
Monitor	Monitor - Responsible for reviewing whether a task or action is being carried out satisfactorily and, where appropriate, requiring action to be taken to ensure task is delivered appropriately.				
Decision/Action	Members	Trust Board	Executive leadership team	Local governing board	Headteacher
G.10	Action legal claims.		Decide	Deliver	
G.11	Dispose of or acquire land		Decide	Deliver	Consulted
G.12	Appoint and remove members of the LGB (apart from ex-officio and foundation governors).		Decide	Consulted	Consulted – co-opted appointments only
G.13	Ratify and review all statutory and DGAT policies.		Decide As per the DGAT Policy arrangements and processes guidance.	Consulted	Decide As per the DGAT Policy arrangements and processes guidance.
G.14	Monitor the implementation of Trust-wide policies and additional policies as set out in the DGAT Policy arrangements and processes guidance.		Monitor As per the DGAT Policy arrangements and processes guidance.	Monitor As per the DGAT Policy arrangements and processes guidance.	Deliver Monitor
G.15	Determine, on an annual basis, those policies which will be developed by the		Decide		

Governance					
Decide	Decide - Has primary responsibility for decision making related to the decision or action.				
Consulted	Consulted - Will be consulted as part of the process of completing a task. Their contribution may inform the approach or decision.				
Deliver	Deliver - Accountable for: undertaking particular tasks; following agreed policies and procedures; ensuring appropriate training of staff.				
Monitor	Monitor - Responsible for reviewing whether a task or action is being carried out satisfactorily and, where appropriate, requiring action to be taken to ensure task is delivered appropriately.				
Decision/Action	Members	Trust Board	Executive leadership team	Local governing board	Headteacher
	Trust and are mandatory for all Trust schools.				
G.16	Implement and monitor any policy addendum required in the event of extraordinary events or circumstances.	Monitor	Deliver	Monitor	Deliver
G.17	Evaluate the development needs of local governors and implement an appropriate training and development programme.	Monitor	Decide Deliver Monitor	Consulted Decide At school level and in consultation with the Head of Governance and People	
G.18	To consider requests from other schools to join the Trust.	Decide	Consulted Deliver		
G.19	To consider at school level further delegation of functions to committees or			Decide Deliver	

Governance					
Decide	Decide - Has primary responsibility for decision making related to the decision or action.				
Consulted	Consulted - Will be consulted as part of the process of completing a task. Their contribution may inform the approach or decision.				
Deliver	Deliver - Accountable for: undertaking particular tasks; following agreed policies and procedures; ensuring appropriate training of staff.				
Monitor	Monitor - Responsible for reviewing whether a task or action is being carried out satisfactorily and, where appropriate, requiring action to be taken to ensure task is delivered appropriately.				
Decision/Action	Members	Trust Board	Executive leadership team	Local governing board	Headteacher
individuals, e.g. link local governors.					

School Effectiveness					
Decide	Decide - Has primary responsibility for decision making related to the decision or action.				
Consulted	Consulted - Will be consulted as part of the process of completing a task. Their contribution may inform the approach or decision.				
Deliver	Deliver - Accountable for: undertaking particular tasks; following agreed policies and procedures; ensuring appropriate training of staff.				
Monitor	Monitor - Responsible for reviewing whether a task or action is being carried out satisfactorily and, where appropriate, requiring action to be taken to ensure task is delivered appropriately.				
Decision/Action	Members	Trust Board	Executive leadership team	Local governing board	Headteacher
SE.1 Determine the Trust performance management policy.		Decide	Consulted		
SE.2 Implement the performance management policy		Decide Monitor	Deliver	Deliver Monitor	Deliver

	for the headteacher and other staff.		Lead the performance management process for the CEO and monitor across the Trust.	DCEO to lead the performance management process of the Headteacher in partnership with the LGB via the chair of governors or an appointed governor	DCEO to lead the performance management process of the Headteacher in partnership with the LGB via the chair of governors or an appointed governor. Monitor the implementation of the performance management policy at school level.	Implement the performance management policy for school staff.
SE.3	Monitor, review and challenge the outcomes of groups of pupils Including SEND, pupil premium, EAL.		Decide Monitor	Monitor	Monitor	Deliver Monitor
SE.4	Ensure the school offers a broad and balanced curriculum		Monitor	Monitor	Monitor	Decide Monitor
SE.5	Ensure a curriculum is implemented which is broad and balanced and is designed to promote educational excellence for pupils.			Monitor Consulted	Monitor	Deliver Monitor
SE6	Review the quality of education and pupil progress across the school and challenge where necessary		Monitor	Monitor	Monitor	Monitor Deliver

SE.7	Monitor the quality of teaching and learning and ensure appropriate support, challenge and intervention.			Decide Monitor		Monitor
SE.8	Implement and monitor a behaviour policy.			Monitor	Monitor	Decide Deliver
SE.9	Ensure excellent behaviour for learning.			Monitor	Monitor	Decide Deliver Monitor
SE.10	Discharge duties and ensure provision for all pupils with SEND by appointing a "responsible person" and ensuring needs are met.			Monitor	Monitor	Decide
SE.11	Appoint a local governor responsible for SEN and inclusion.			Monitor	Decide Deliver	
SE.12	Ensure compliance with the Equality Act 2010 requirements within the school e.g. policy development, recruitment procedures.		Decide	Monitor Deliver	Monitor	Deliver
SE.13	Adopt and review home-school agreements.				Decide Monitor	Deliver
SE.14	Monitor exclusions.					

			Monitor	Monitor	Monitor	
SE.15	Convene a panel to consider any permanent exclusion of a pupil or any number of fixed-term exclusions which exceed a total of 15 days per term.			Monitor via DCEO Consulted	Decide	
SE.16	Monitor the use of Pupil Premium and the impact on pupil outcomes.			Monitor	Monitor	
SE.17	Appoint a local governor responsible for Pupil Premium.			Monitor	Decide Deliver	
SE.18	Consider and approve off-site visits for pupils of more than 24 hrs. and ensure appropriate risk assessments in place.			Monitor	Consulted Monitor use of SHE unit risk assessments	Decide
SE.19	Ensure high attendance levels for all pupils within the school.		Monitor	Monitor	Monitor	Deliver Monitor

Safeguarding						
Decide		Decide - Has primary responsibility for decision making related to the decision or action.				
Consulted		Consulted - Will be consulted as part of the process of completing a task. Their contribution may inform the approach or decision.				
Deliver		Deliver - Accountable for: undertaking particular tasks; following agreed policies and procedures; ensuring appropriate training of staff.				
Monitor		Monitor - Responsible for reviewing whether a task or action is being carried out satisfactorily and, where appropriate, requiring action to be taken to ensure task is delivered appropriately.				
Decision/Action		Members	Trust Board	Executive leadership team	Local governing board	Headteacher
S.1	Determine the Trust safeguarding policy.		Decide	Deliver		
S.2	Ensure compliance with all safeguarding policy and practice.		Monitor	Monitor	Monitor	Deliver Monitor
S.3	Appoint a safeguarding local governor.			Monitor	Decide Deliver	
S.4	Ensure safer recruitment policy, processes and practice.		Decide Monitor	Deliver Monitor	Monitor	Deliver Monitor
S.5	Ensure diversity is respected, including the upholding of the Prevent agenda prohibiting political indoctrination and ensuring the balanced treatment of political issues.			Monitor	Monitor	Deliver

Safeguarding						
Decide		Decide - Has primary responsibility for decision making related to the decision or action.				
Consulted		Consulted - Will be consulted as part of the process of completing a task. Their contribution may inform the approach or decision.				
Deliver		Deliver - Accountable for: undertaking particular tasks; following agreed policies and procedures; ensuring appropriate training of staff.				
Monitor		Monitor - Responsible for reviewing whether a task or action is being carried out satisfactorily and, where appropriate, requiring action to be taken to ensure task is delivered appropriately.				
Decision/Action		Members	Trust Board	Executive leadership team	Local governing board	Headteacher
S.6	Ensure a compliant single central record is maintained.		Monitor	Monitor Consulted Deliver (Trust single central record)	Monitor	Decide Deliver Monitor

Christian Character						
Decide		Decide - Has primary responsibility for decision making related to the decision or action.				
Consulted		Consulted - Will be consulted as part of the process of completing a task. Their contribution may inform the approach or decision.				
Deliver		Deliver - Accountable for: undertaking particular tasks; following agreed policies and procedures; ensuring appropriate training of staff.				
Monitor		Monitor - Responsible for reviewing whether a task or action is being carried out satisfactorily and, where appropriate, requiring action to be taken to ensure task is delivered appropriately.				
Decision/Action		Members	Trust Board	Executive leadership team	Local governing board	Headteacher
CC.1	Ensure and protect the Christian character of the	Decide	Monitor	Monitor Deliver	Monitor	Deliver Monitor

	school (as monitored by Section 48 inspections Statutory Inspection of Anglican and Methodist Schools (SIAMS)).					
CC.2	Ensure the provision of collective worship and the provision of RE in line with school's curriculum.		Monitor	Consulted Monitor	Monitor	Deliver Monitor
CC.3	Develop and implement the school's distinctive Christian vision.			Monitor	Decide In partnership with the headteacher and the school community Monitor	Decide In partnership with the LGB and school community Deliver Monitor
CC.4	Ensure that all pupils take part in a high quality daily act of collective worship.			Monitor	Monitor	Deliver Monitor
CC.5	Ensure the Christian values and character of the school are embedded in all practice, including through the provision of high quality RE teaching and learning.			Monitor	Monitor	Deliver Monitor
CC.6	Ensure the school community understands the		Monitor	Monitor	Monitor	Deliver

	impact of the Trust's Christian vision and how this relates to the school's own distinctive Christian vision.					
CC.7	Ensure the school develops and maintains successful links with the church and parish and that impact of this is identified within the school community.		Monitor	Monitor	Monitor	Deliver

Finance						
Decide		Decide - Has primary responsibility for decision making related to the decision or action.				
Consulted		Consulted - Will be consulted as part of the process of completing a task. Their contribution may inform the approach or decision.				
Deliver		Deliver - Accountable for: undertaking particular tasks; following agreed policies and procedures; ensuring appropriate training of staff.				
Monitor		Monitor - Responsible for reviewing whether a task or action is being carried out satisfactorily and, where appropriate, requiring action to be taken to ensure task is delivered appropriately.				
	Decision/Action	Members	Trust Board	Executive leadership team	Local governing board	Headteacher
F.1	Appoint external auditors for the Trust.	Decide				
F.2	Appoint internal auditors for the Trust.		Decide			
F.3	Prepare annual accounts.			Deliver		

Finance						
Decide		Decide - Has primary responsibility for decision making related to the decision or action.				
Consulted		Consulted - Will be consulted as part of the process of completing a task. Their contribution may inform the approach or decision.				
Deliver		Deliver - Accountable for: undertaking particular tasks; following agreed policies and procedures; ensuring appropriate training of staff.				
Monitor		Monitor - Responsible for reviewing whether a task or action is being carried out satisfactorily and, where appropriate, requiring action to be taken to ensure task is delivered appropriately.				
Decision/Action		Members	Trust Board	Executive leadership team	Local governing board	Headteacher
F.4	Implement the Trust Finance Policy and Pay Policy.		Decide	Deliver Monitor	Monitor	Deliver Monitor
F.5	Appoint an Accounting Officer.		Decide			
F.6	Determine salaries of staff and pay progression within the school in line with the Trust's pay policy.		Decide	Consulted Deliver	Decide (via the Pay Panel)	Deliver
F.7	Determine the proportion of the overall Trust budget to be delegated to individual schools.		Decide			
F.8	Ensure proper financial controls are in place.		Decide	Deliver Monitor		Deliver
F.9	Establish an LGB Finance and Resources Committee (required).			Monitor	Deliver	
F.10	Propose the individual school budget.			Consulted	Decide	

Finance						
Decide		Decide - Has primary responsibility for decision making related to the decision or action.				
Consulted		Consulted - Will be consulted as part of the process of completing a task. Their contribution may inform the approach or decision.				
Deliver		Deliver - Accountable for: undertaking particular tasks; following agreed policies and procedures; ensuring appropriate training of staff.				
Monitor		Monitor - Responsible for reviewing whether a task or action is being carried out satisfactorily and, where appropriate, requiring action to be taken to ensure task is delivered appropriately.				
Decision/Action		Members	Trust Board	Executive leadership team	Local governing board	Headteacher
F.11	To approve the budget each financial year.		Decide			
F.12	Ensure school expenditure is in keeping with the budget and adheres to the Trust finance policy			Consulted Monitor	Monitor	Deliver
F.13	Open and oversee the operation of the school's bank account and ensure financial management systems and accounting records are administered in accordance with the finance policy.			Deliver Monitor		
F.14	Authorise financial expenditure outside of the agreed budget in line with the finance policy.		Decide	Decide Monitor	Monitor	Deliver
	Authorise the spending of reserves		Decide	Deliver Monitor	Monitor	Deliver

Finance						
Decide		Decide - Has primary responsibility for decision making related to the decision or action.				
Consulted		Consulted - Will be consulted as part of the process of completing a task. Their contribution may inform the approach or decision.				
Deliver		Deliver - Accountable for: undertaking particular tasks; following agreed policies and procedures; ensuring appropriate training of staff.				
Monitor		Monitor - Responsible for reviewing whether a task or action is being carried out satisfactorily and, where appropriate, requiring action to be taken to ensure task is delivered appropriately.				
Decision/Action		Members	Trust Board	Executive leadership team	Local governing board	Headteacher
F.15	Approve contracts up to the limits of delegation and within an agreed budget and in line with the Trust's finance policy.		Decide	Monitor Consulted	Decide as per agreed limits in the Trust finance policy	Decide as per agreed limits in the Trust finance policy Deliver
F.16	Ensure the promotion and provision of free school meals to those pupils meeting the criteria.			Monitor	Monitor	Deliver
F.17	Implement a policy for the approval and payment of trustee and governor expenses		Decide	Monitor		

Central Services

Decide	Decide - Has primary responsibility for decision making related to the decision or action.
Consulted	Consulted - Will be consulted as part of the process of completing a task. Their contribution may inform the approach or decision.
Deliver	Deliver - Accountable for: undertaking particular tasks; following agreed policies and procedures; ensuring appropriate training of staff.
Monitor	Monitor - Responsible for reviewing whether a task or action is being carried out satisfactorily and, where appropriate, requiring action to be taken to ensure task is delivered appropriately.

Decision/Action		Members	Trust Board	Executive leadership team	Local governing board	Headteacher
CS.1	Determine the scope of mandatory core services to be delivered by the Trust on behalf of its schools.		Decide	Deliver	Consulted	Consulted
CS.2	Determine a Trust-wide procurement policy and set the delegated levels of authority for such contracts.		Decide	Deliver		
CS.3	Approve contracts which constitute related party transactions.			Decide		
CS.4	Enter into contracts up to the limits of delegation, within an agreed budget and in accordance with the finance policy.			Decide Up to delegated limits within the financial procedures policy	Decide Up to limit of LGB delegation	Consulted

Human Resources

Decide	Decide - Has primary responsibility for decision making related to the decision or action.
Consulted	Consulted - Will be consulted as part of the process of completing a task. Their contribution may inform the approach or decision.
Deliver	Deliver - Accountable for: undertaking particular tasks; following agreed policies and procedures; ensuring appropriate training of staff.
Monitor	Monitor - Responsible for reviewing whether a task or action is being carried out satisfactorily and, where appropriate, requiring action to be taken to ensure task is delivered appropriately.

Decision/Action		Members	Trust Board	Executive leadership team	Local governing board	Headteacher
HR.1	Define any overarching leadership structures across schools.			Decide	Consulted	Consulted Deliver
HR.2	Undertake the process to appoint the headteacher			Decide CEO or DCEO sits as part of the selection panel and has the power of veto	Consulted	
HR.3	Appoint other senior staff (selection panel).			Monitor Consulted for DHT appointments	Decide LGB to support the headteacher with recruitment as appropriate and requested.	Decide All local senior leader appointments.
HR.4	Appoint all other staff.			Monitor	Decide LGB to support the headteacher with recruitment as	Decide All local staff appointments

					appropriate and requested.	
HR.5	Appoint staff working across multiple schools.			Decide		Consulted
HR.6	Ensure compliance with terms and conditions of employment and staff handbooks.			Decide Monitor		Monitor
HR.7	Oversee effective engagement with unions and professional associations.			Decide In conjunction with HR provider		
HR.8	Determine DGAT 'family' training and development in line with distinctive ethos, aims and vision of the Trust.			Decide	Consulted	Consulted
HR.9	Be accountable for ensuring the training and development of individual school staff.				Decide	
HR.10	Dismiss the Headteacher			Decide	Consulted	
HR.11	Dismiss other staff.				Decide A Trust representative will be part of the decision-making panel.	Decide
HR.12	Suspend the headteacher			Decide	Consulted	
HR.13	Suspend other staff.				Consulted (CoG)	Decide

					CEO to be informed prior to suspension.	In consultation with the CoG. CEO to be informed prior to suspension.
HR.14	End suspension (headteacher).			Decide Joint decision making with Trustees	Consulted	
HR.15	End suspension (other staff).				Consulted	Decide
HR.16	Determine dismissal payments/early retirement.		Decide In partnership with the CEO	Decide In partnership with the Trust Board		
HR.17	Monitor and report on the attendance of staff.		Monitor	Monitor Deliver	Monitor	Deliver

Pupil Admissions

Decide	Decide - Has primary responsibility for decision making related to the decision or action.
Consulted	Consulted - Will be consulted as part of the process of completing a task. Their contribution may inform the approach or decision.
Deliver	Deliver - Accountable for: undertaking particular tasks; following agreed policies and procedures; ensuring appropriate training of staff.
Monitor	Monitor - Responsible for reviewing whether a task or action is being carried out satisfactorily and, where appropriate, requiring action to be taken to ensure task is delivered appropriately.

Decision/Action		Members	Trust Board	Executive leadership Team	Local governing board	Headteacher
PA.1	Consult with all key stakeholders before determining an admissions policy.		Decide		Deliver At the direction of the Trust Board	Consulted
PA.2	Be accountable for all admission application decisions.				Deliver	
PA.3	Make arrangements for determining admissions and hearing admission appeals.				Decide	Deliver
PA.4	Appeal when appropriate, against LA directions to admit pupil(s).				Decide	Consulted
PA.5	Approve any changes to the Pupil Admission Number		Decide	Consulted	Consulted	Consulted Deliver

Premises and Insurance						
Decide		Decide - Has primary responsibility for decision making related to the decision or action.				
Consulted		Consulted - Will be consulted as part of the process of completing a task. Their contribution may inform the approach or decision.				
Deliver		Deliver - Accountable for: undertaking particular tasks; following agreed policies and procedures; ensuring appropriate training of staff.				
Monitor		Monitor - Responsible for reviewing whether a task or action is being carried out satisfactorily and, where appropriate, requiring action to be taken to ensure task is delivered appropriately.				
Decision/Action		Members	Trust Board	Executive leadership team	Local governing board	Headteacher
PI.1	Procure buildings insurance and personal liability.			Decide		
P.2	Develop an estates strategy or master plan.		Decide	Deliver	Consulted for own school	Consulted for own school
P.3	Maintain buildings, including implementing a premises and development plan.			Consulted	Decide Monitor	Deliver
P.4	Determine Trust health and safety policy.		Decide			
P.5	Ensure that a compliant health and safety policy is implemented.		Decide Monitor	Deliver	Monitor	Deliver
P.6	Review security of school premises and equipment.		Monitor	Deliver Monitor	Monitor	Consulted Deliver

Premises and Insurance						
Decide		Decide - Has primary responsibility for decision making related to the decision or action.				
Consulted		Consulted - Will be consulted as part of the process of completing a task. Their contribution may inform the approach or decision.				
Deliver		Deliver - Accountable for: undertaking particular tasks; following agreed policies and procedures; ensuring appropriate training of staff.				
Monitor		Monitor - Responsible for reviewing whether a task or action is being carried out satisfactorily and, where appropriate, requiring action to be taken to ensure task is delivered appropriately.				
Decision/Action		Members	Trust Board	Executive leadership team	Local governing board	Headteacher
P.7	Draw up, agree and monitor an accessibility plan for the school.		Monitor	Monitor	Decide	Consulted Deliver
P.8	Determine a Trust lettings policy.		Decide	Consulted Deliver		
P.9	Ensure suitable local risk assessments are prepared and appropriate actions taken.		Monitor	Monitor	Monitor	Deliver
P.10	Monitor the accident book and agree appropriate actions.				Monitor	Consulted Deliver

Administration	
Decide	Decide - Has primary responsibility for decision making related to the decision or action.
Consulted	Consulted - Will be consulted as part of the process of completing a task. Their contribution may inform the approach or decision.

Administration						
Deliver		Deliver - Accountable for: undertaking particular tasks; following agreed policies and procedures; ensuring appropriate training of staff.				
Monitor		Monitor - Responsible for reviewing whether a task or action is being carried out satisfactorily and, where appropriate, requiring action to be taken to ensure task is delivered appropriately.				
Decision/Action		Members	Trust Board	Executive leadership team	Local governing board	Headteacher
A.1	Set compliant times of school sessions and the dates of school terms and holidays and notify the Trust.				Consulted Monitor	Decide Deliver
A.2	Ensure that school is open for 380 sessions for pupils in an academic year. Set compliant times and inform the Trust			Monitor	Monitor	Deliver
A.3	Ensure that the school website is compliant.			Monitor	Monitor	Deliver
A.4	Ensure 'Get information about schools' is up-to date and compliant.			Monitor	Monitor	Deliver
A.5	Ensure that a compliant data protection policy is implemented.		Decide	Deliver Monitor	Monitor	Deliver